

Idaho's Centers for Independent Living



01 WHO WE ARE

We are mentors, navigators and advocates who help people with disabilities get work and live in their communities.

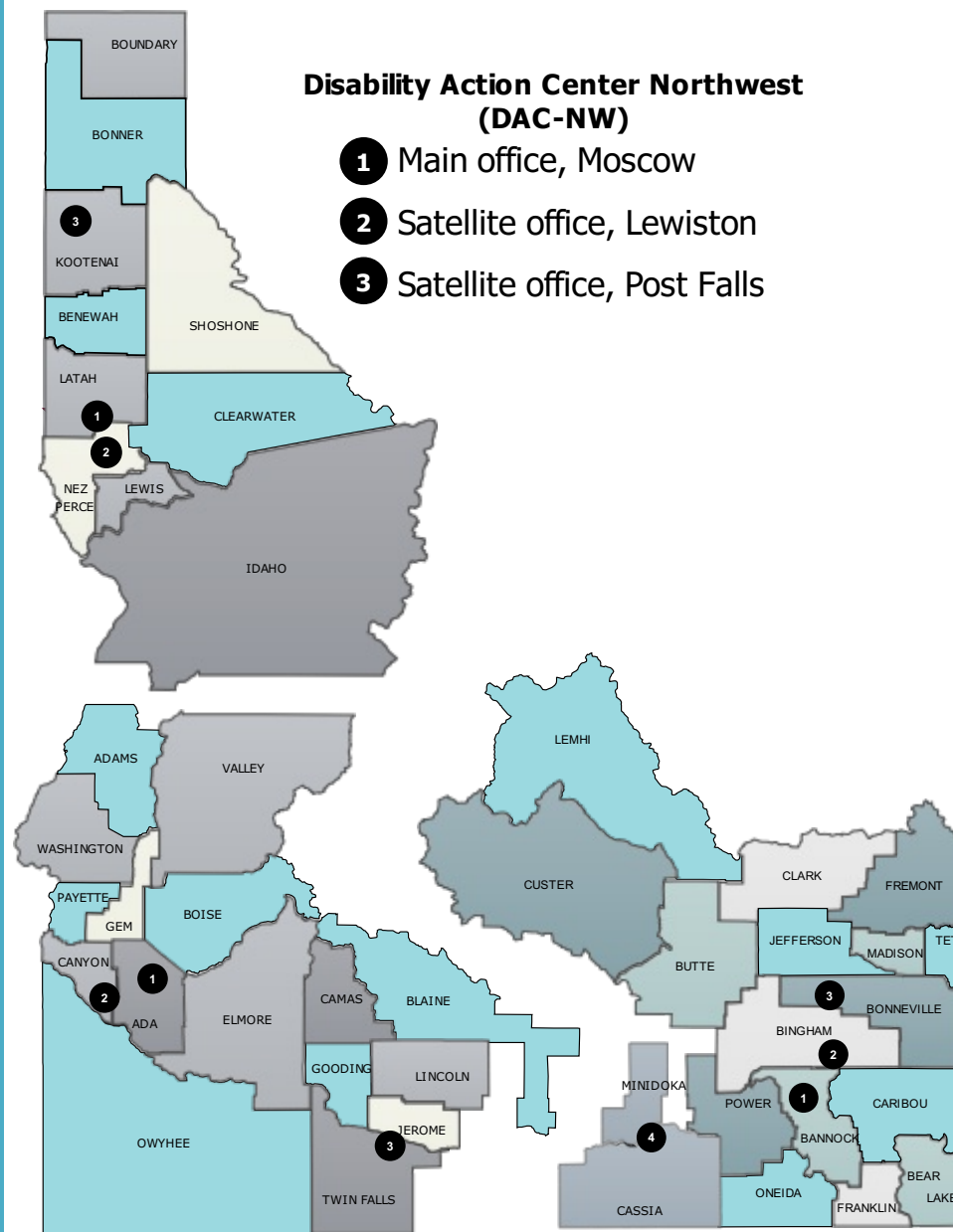


In FY2016, we employed 45 individuals with a disability (82% of our staff!).

In partnership with Idaho State Independent Living Council

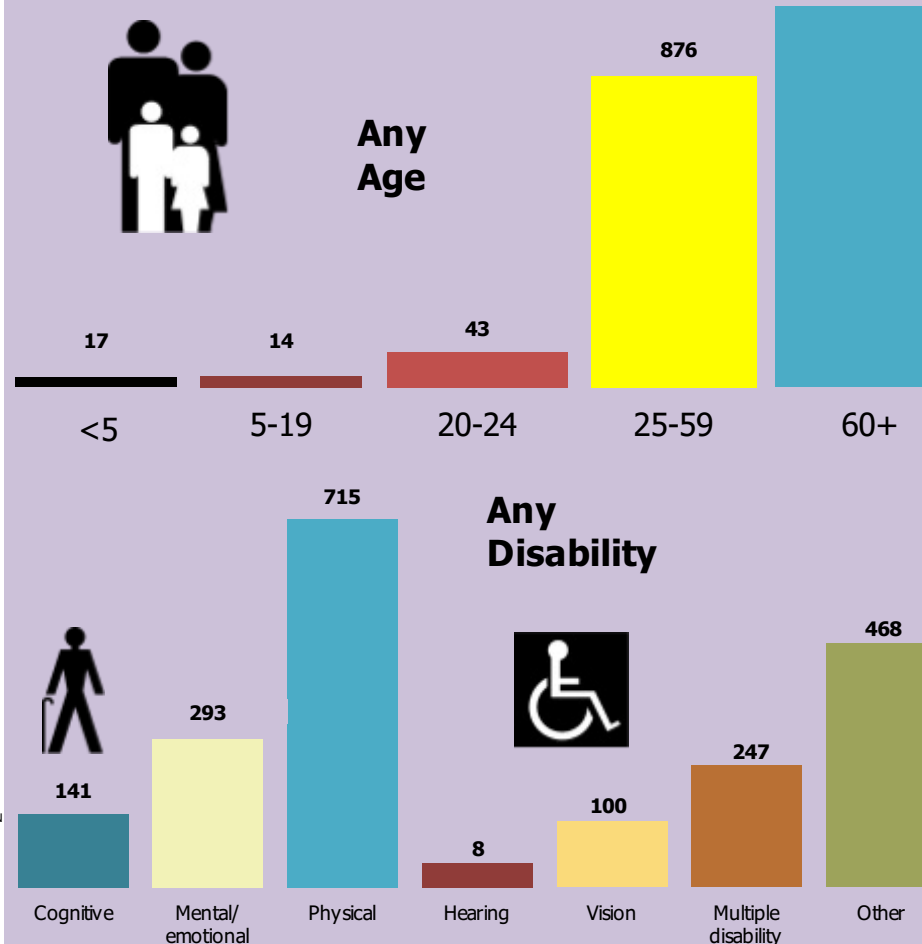


02 WHERE WE WORK



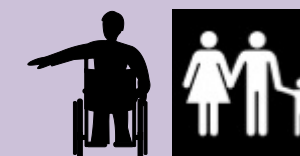
03 WHO WE SERVE

We serve people with complex needs who are at risk of being institutionalized.



04 WE BELIEVE

Individuals and their families are best positioned to make the right choices for themselves and their families.



05

WHAT WE DO

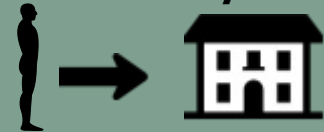
We support individuals and families as they strive for greater independence and choice, advocating for system changes that help Idahoans with disabilities remain in or return to their community of choice.

Community-Based Living



The vast majority of Idahoans with disabilities who are living in their home or apartment are able to maintain or improve their living situation with our assistance.

Transition to Community-Based Living



Many Idahoans with disabilities who are homeless or at risk of becoming homeless are able to improve their living situation with our assistance.

Relocation to Community-Based Living



Many Idahoans with disabilities who are in a nursing home or institution or at risk of entering into an institution are able to return to or remain in their communities with our assistance.



Cost of Services per Person

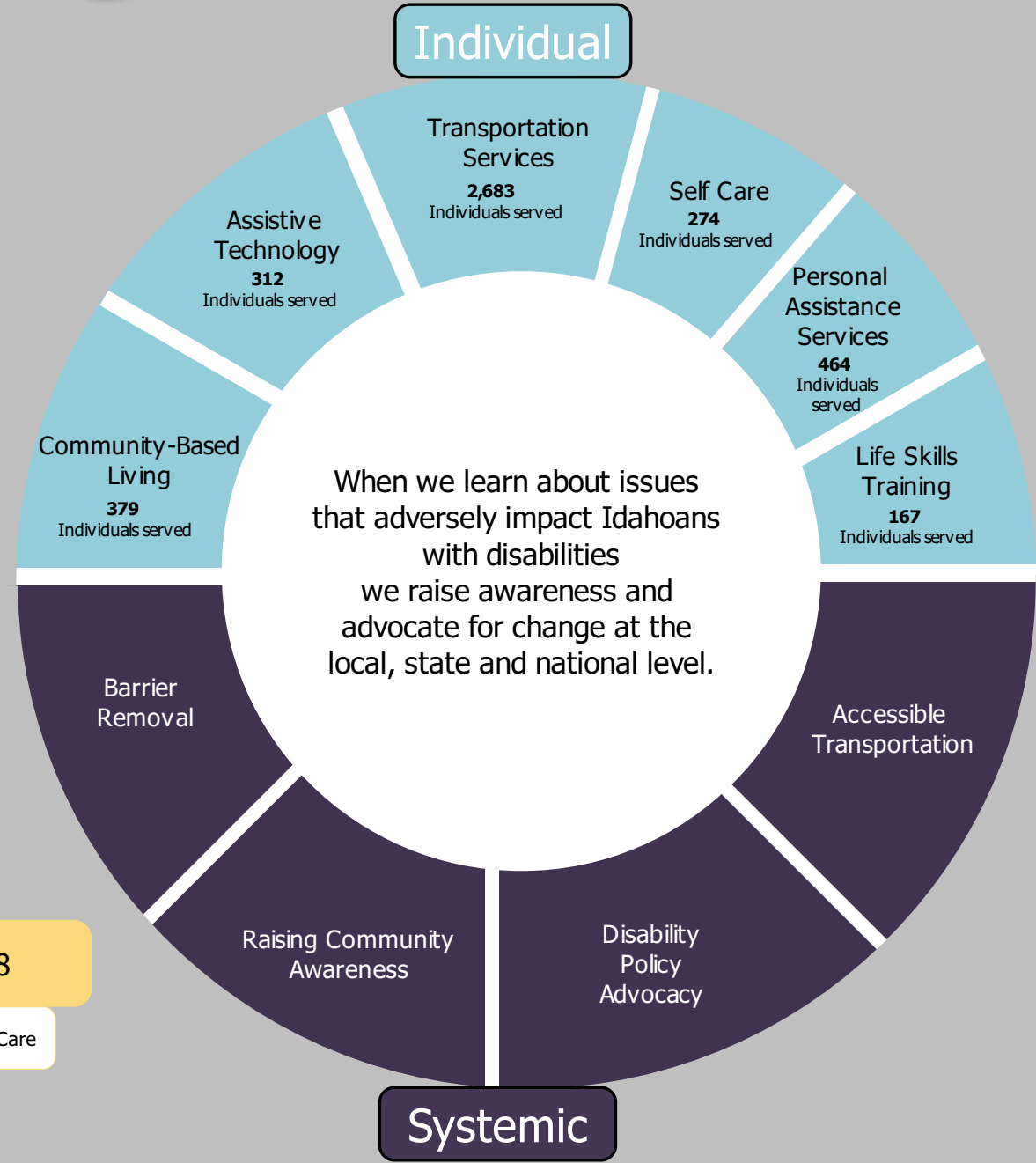


Genworth Cost of Care Survey, 2016, for one bed, single occupancy.

"The Center for Independent Living has helped me maintain my independence and quality of life, all while providing me the resources to fully participate in my community."

06

OUR RESULTS



Last year we helped 29 people transition from a nursing home to home and community based care settings. These transitions saved **\$1,838,542 of public funds.**

All data provided by Idaho's Centers for Independent Living, and Idaho Department of Health and Welfare FFY 2016